



2016 Fort McMurray Wildfire Evacuation

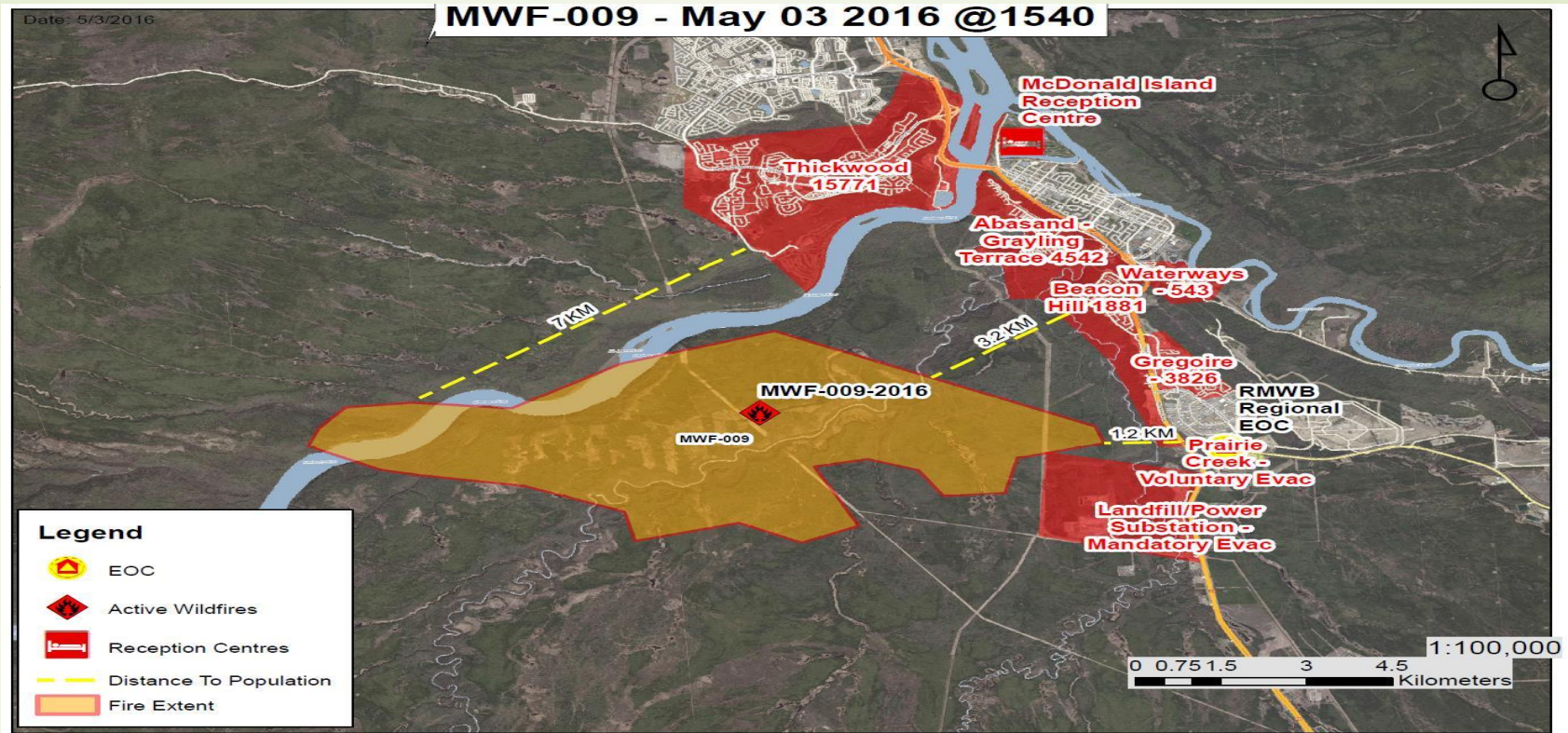
BLCN Reception Centre

Prepared by: Marilyn Gladue, Beaver Lake Health Services Health Director



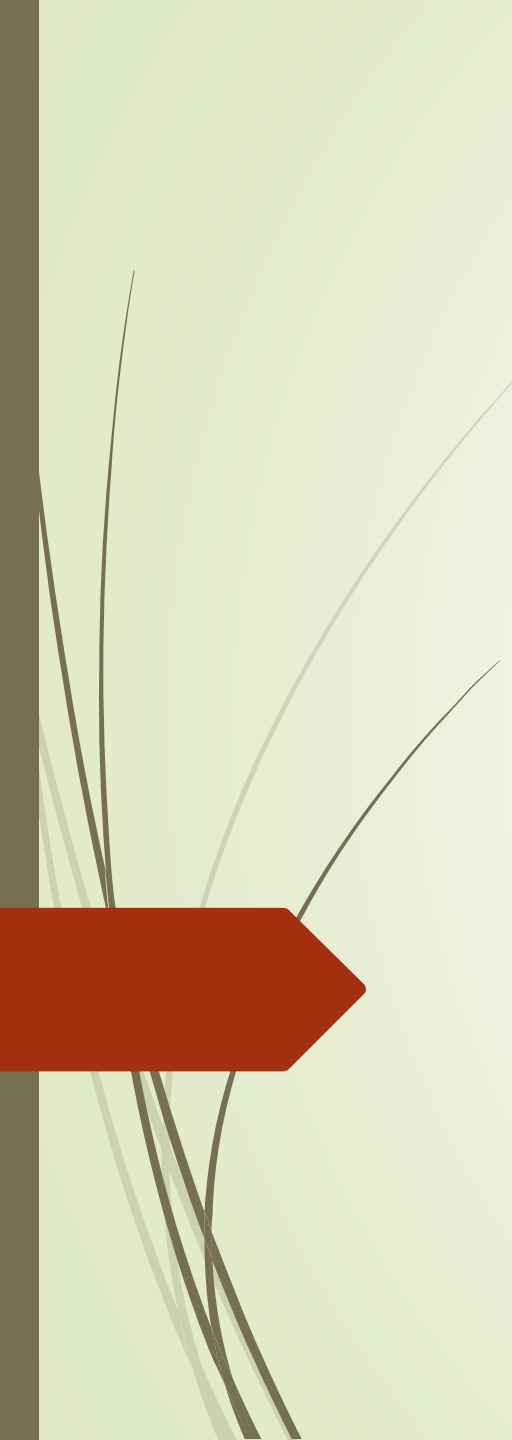
Sunday May 1st

The devastating fire starts



Tuesday, May 3rd

Beaver Lake Cree Nation meets with all department heads to discuss opening up a Reception Center for the Fort Mac Evacuees and goes into operation by the evening. As the (recently resigned) Director of Emergency Management, I received updates from (POC) Provincial Operation Center.



“In planning over the past few months, ESS emergency social services (First Nations) have started to create ESS response to disaster events. Due to the present major emergency facing Alberta and supporting evacuees from the Ft McMurray area. Beaver Lake Cree Nation, is requesting the assistance , continue managing the reception Center ,here in Beaver Lake Cree Nation . Staffing requirements or positions needed are ; Health staff, social services staff, security, cooks, cleaning, general labourer. A conference call is being established with your DEM director of emergency to communicate the detailed needs, time requirements and number of personnel required by shifts.” Rudy Parenteau, Field Officer, First Nations Emergency Management

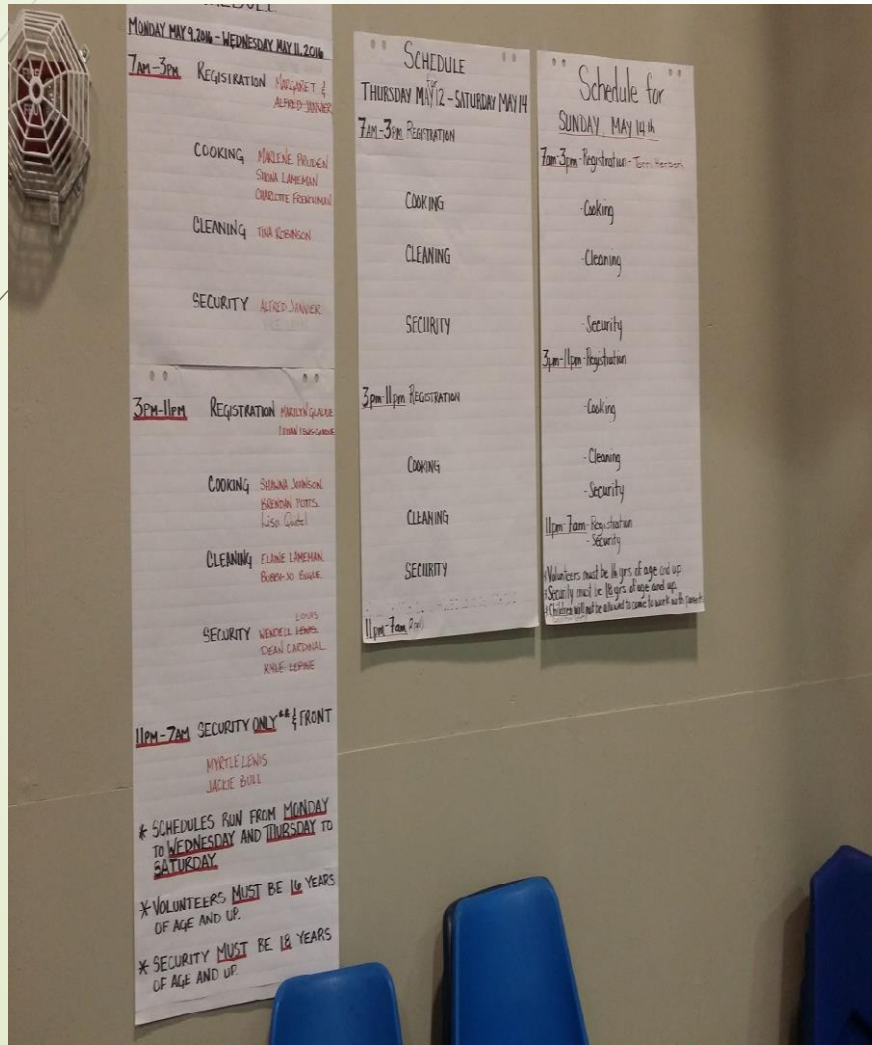
This email was sent out to other First Nations by Rudy Parenteau, Field Officer, First Nations Emergency Management. Cold Lake responded and sent their Health Director/DEM, Margaret Janvier, Alfred Janvier, Sherisse Janvier and Kyle Lepine (May 10-15), and the many other volunteers from Beaver Lake, local businesses, Lac La Biche and its County, local First Nations and Metis Settlements, and others that came as far as Ontario.

BLCN Reception Center

May 3 – May 20, 2016

- **Provincial Operations Center – May 8, 2016**
- **Edmonton** - Registered: 4400; Staying overnight: 1000.
- **Fort McKay** – Registered: approximately 500. It is now closed.
- **Lac La Biche** – Registered: 4,589; Staying overnight: 318
- **St. Paul** – Registered: 507; Staying overnight: 0
- **Grasslands** – Registered: 2,000; Staying overnight: 0
- **Drayton Valley** – Registered: 140; Staying overnight: 0
- **Smoky Lake** – Registered: 122; Staying overnight: 0
- **Calgary** – Registered: 1315; Staying overnight: 1315
- **Fort Chipewyan** – Registered: 215; Staying overnight: 0
- **Athabasca** – Registered: 1274; Staying overnight: 12
- **Beaver Lake** - Registered: 42; Staying overnight: 42

Beaver Lake Cree Nation Reception Center





**Always
help someone.
You might be the
only one that
does.**



Spirit Science



Have a blessed day